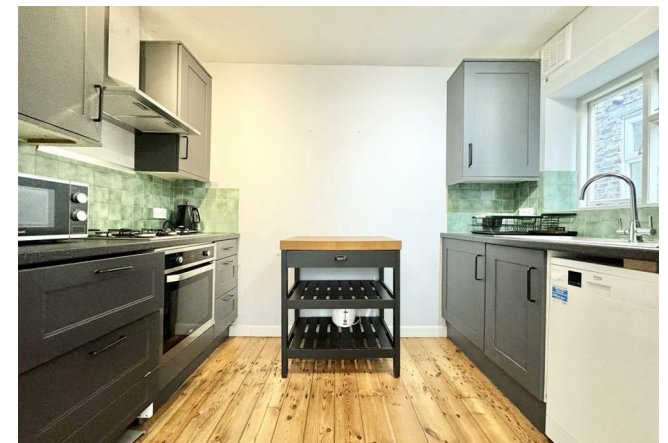


PER MONTH

£2,200 Per Month
Lordship Park

London, N16 5UN

EPC RATING: COUNCIL TAX BAND: D



Energy Efficiency Rating		Current	Potential
Very energy efficient - lower running costs			
(92 plus)	A		
(81-91)	B		
(69-80)	C		
(55-68)	D		
(39-54)	E		
(21-38)	F		
(1-20)	G		
Not energy efficient - higher running costs			
England & Wales		EU Directive 2002/91/EC	

Agents Note: Whilst every care has been taken to prepare these particulars, they are for guidance purposes only. All measurements are approximate and are for general guidance purposes only and whilst every care has been taken to ensure their accuracy, they should not be relied upon and potential buyers/tenants are advised to recheck the measurements



OFFICE ADDRESS
 786-788 Green Lanes
 London
 N21 3RE

OFFICE DETAILS
 0208 800 1155
 management@paul-simon.co.uk